

50 *W* 51

[↗](#) VIEW AVAILABILITES

50/51 WELLS ST | FITZROVIA W1



AN IMPRESSIVE
EDWARDIAN-STYLE
PROPERTY ARRANGED
OVER FIVE FLOORS
IN THE HEART OF
FITZROVIA





LET US BE YOUR LANDLORD PARTNERS



WE OWN OUR BUILDINGS

- Direct contact with the building owner
- No ambiguity over responsibilities
- Efficient query resolution



WE MANAGE OUR BUILDINGS

- We can more effectively manage your end-to-end user experience
- One point of contact for all your office needs
- We fully control connectivity of all our buildings



WE ARE INVESTORS IN REAL ESTATE ACROSS LONDON

- We offer options to grow within your desired location or across our London portfolio
- We have a network of trusted suppliers
- All our locations offer high-quality office accommodation tailored to the location they sit





FIVE FLOORS (541 – 3,689 SQ FT) OF INCREDIBLE QUALITY

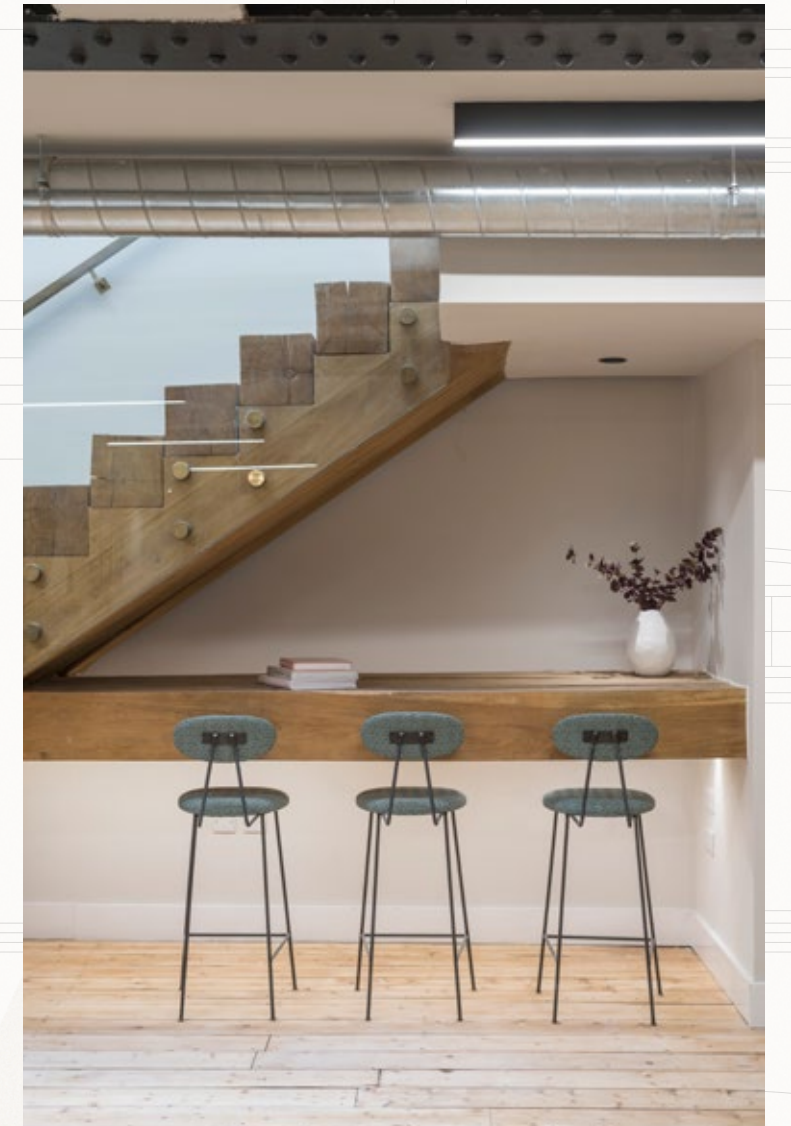
This Edwardian style property has a handsome façade of brick and Portland stone with large windows on all floors providing excellent natural light throughout.

- Heating and cooling on all floors
- Refurbished and self-contained office floors
- Fully-fitted & managed on your behalf
- Dedicated meeting rooms, break-out areas and kitchens
- From 100mb dedicated bandwidth with upgrade options available
- 24/7 access, facilities and IT support

The building has been extensively refurbished in the autumn of 2022 including all the office floors, new toilet and kitchen facilities as well as the creation of warm and welcoming common and reception areas and the creation of bike and shower facilities.







AVAILABLE ON FLEXIBLE TERMS FROM
24 MONTHS, PRICE ON APPLICATION

FLOOR	SQ FT	SQ M	TOUR
Third	541	50.2	
Second	634	58.8	
First	632	58.7	
Ground & Lower Ground	1,882	175	🔗



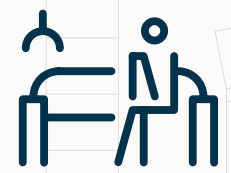
THE FINISHES AND SPECIFICATION OF THE BUILDING HAVE BEEN SUBSTANTIALLY UPGRADED TO MEET THE REQUIREMENTS OF THE MOST DISCERNING OCCUPIERS



FULLY-FURNISHED



DEDICATED MEETING ROOMS



BREAK-OUT SPACES



HIGH SPEED FIBRE IN SITU



24/7 ACCESS



BIKE STORAGE



COOLING/HEATING



DEDICATED KITCHENS



TOILET & SHOWER FACILITIES



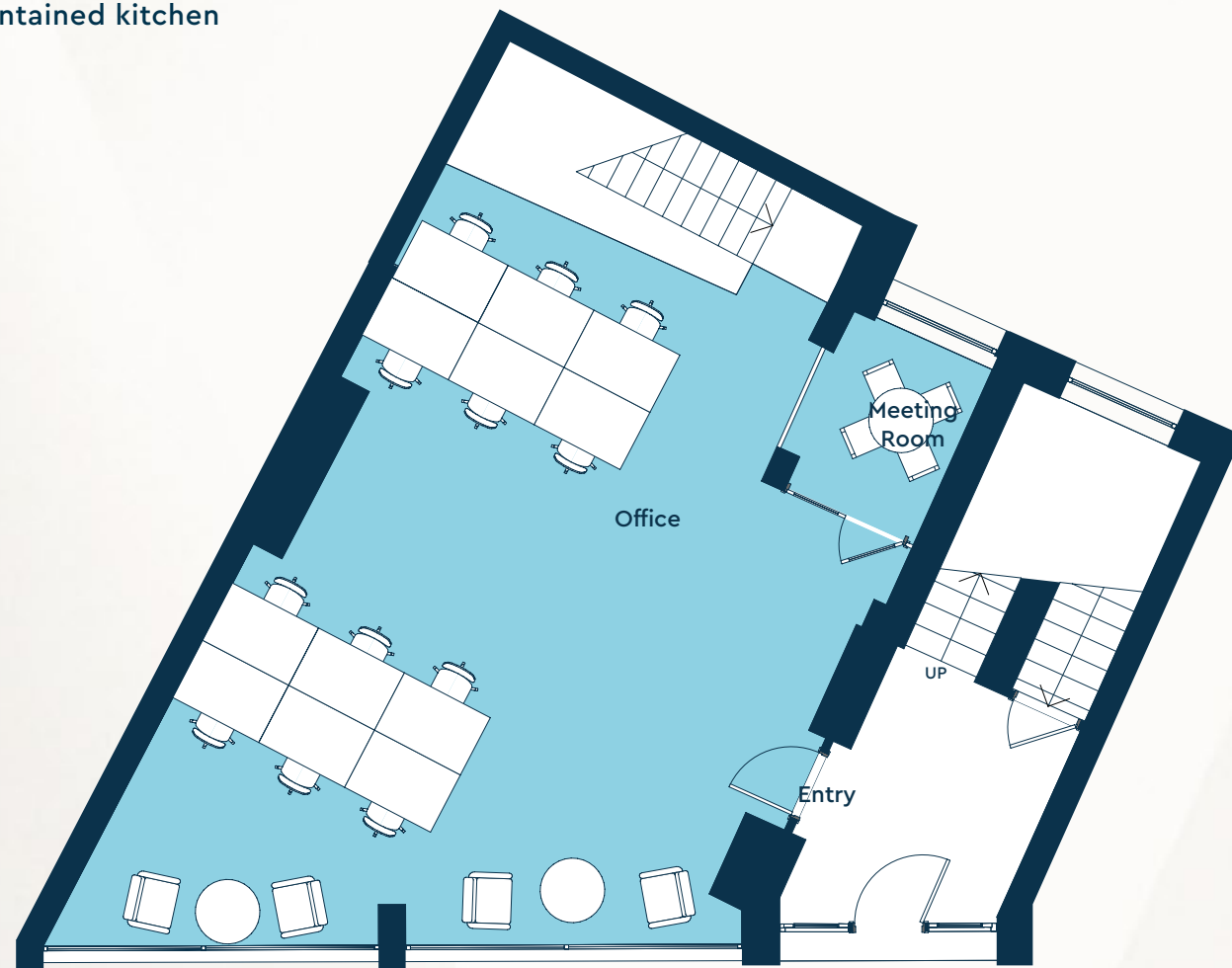


GROUND & LOWER GROUND

1,882 sq ft / 175 sq m

- Open plan for up to 30 desks, dedicated kitchen and break-out
- Office for 18-20 desks with dedicated meeting room/s, break-out and self-contained kitchen

▶ TAKE A VIRTUAL TOUR



W E L L S S T R E E T

GROUND FLOOR

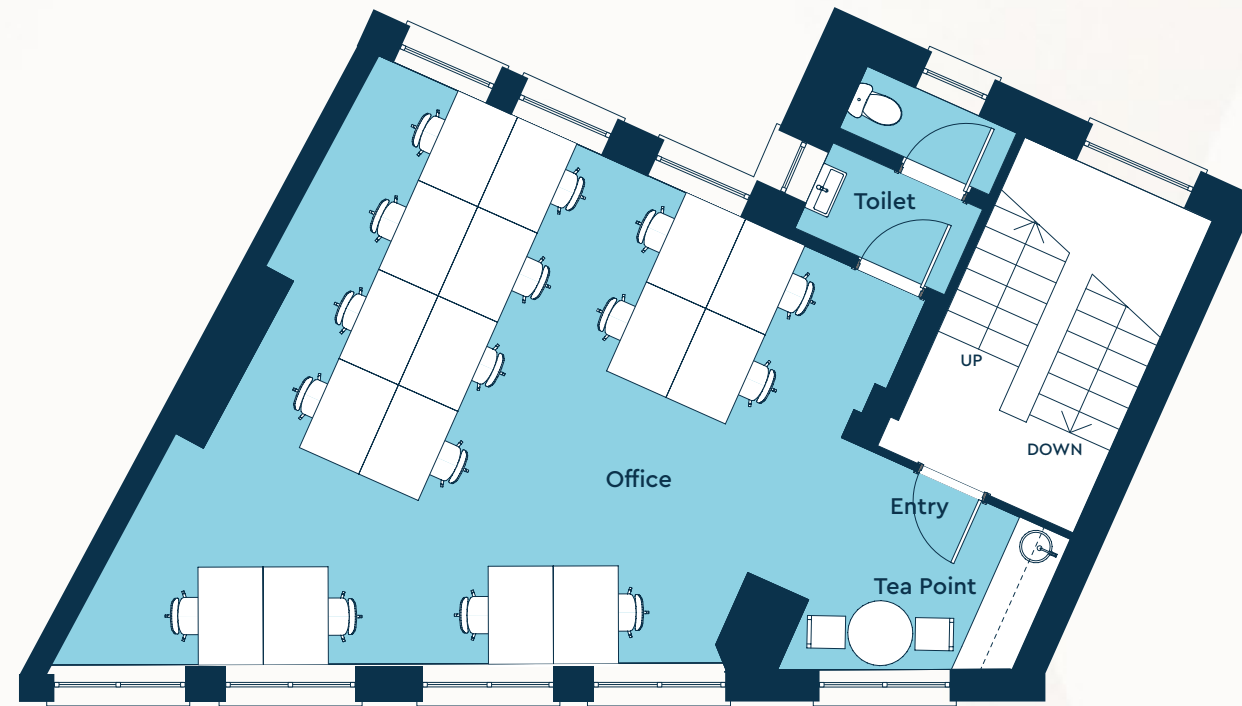


LOWER GROUND FLOOR

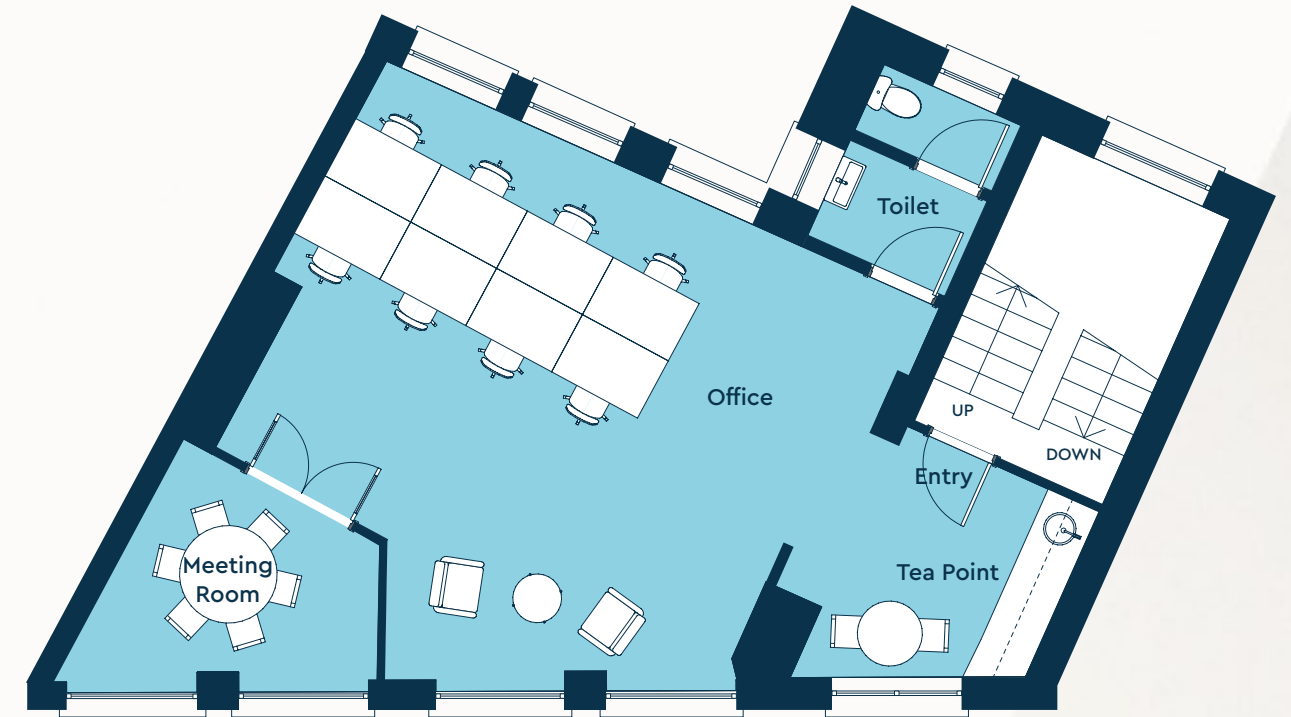


FIRST / SECOND FLOOR

- Self-contained office for up to 16 desks with dedicated teapoint
- Office for 10-12 desks with dedicated meeting room/executive office and teapoint



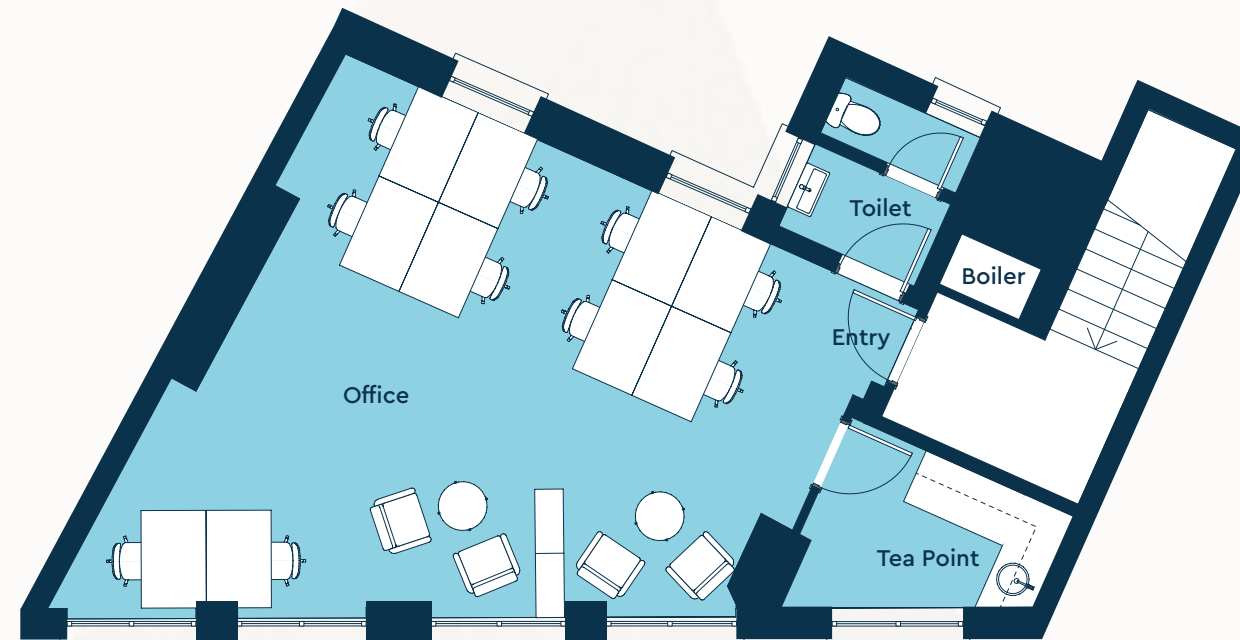
FIRST FLOOR
632 sq ft / 58.7 sq m



SECOND FLOOR
634 sq ft / 58.8 sq m

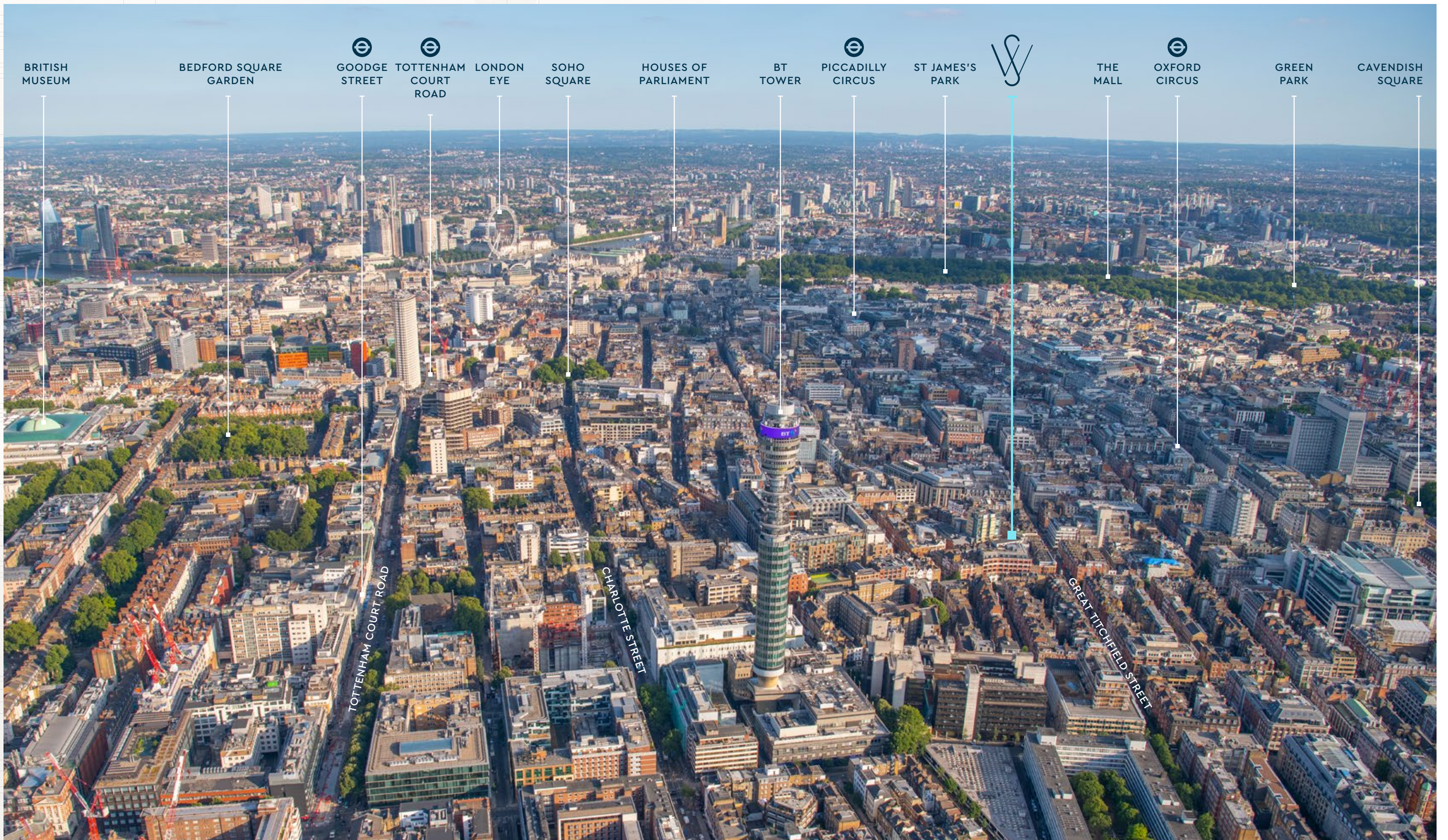
THIRD FLOOR

- Self-contained office for up to 12 desks with dedicated teapoint
- Office for 6-8 desks with dedicated meeting room/executive office, break out and teapoint



THIRD FLOOR
541 sq ft / 50.2 sq m





BRITISH MUSEUM BEDFORD SQUARE GARDEN GOODGE STREET TOTTENHAM COURT ROAD LONDON EYE SOHO SQUARE HOUSES OF PARLIAMENT BT TOWER PICCADILLY CIRCUS ST JAMES'S PARK THE MALL OXFORD CIRCUS GREEN PARK CAVENDISH SQUARE

TOTTENHAM COURT ROAD

CHARLOTTE STREET

GREAT TITCHFIELD STREET



LOCATED IN THE HEART OF FITZROVIA IN THE WEST END, 50/51 IS SURROUNDED BY RESTAURANTS, BARS, SHOPS, GALLERIES AND PARKS.

The property is located on the eastern side of Wells Street, between Mortimer Street and Eastcastle Street and immediately adjacent to Riding House Street in the very centre of Fitzrovia.

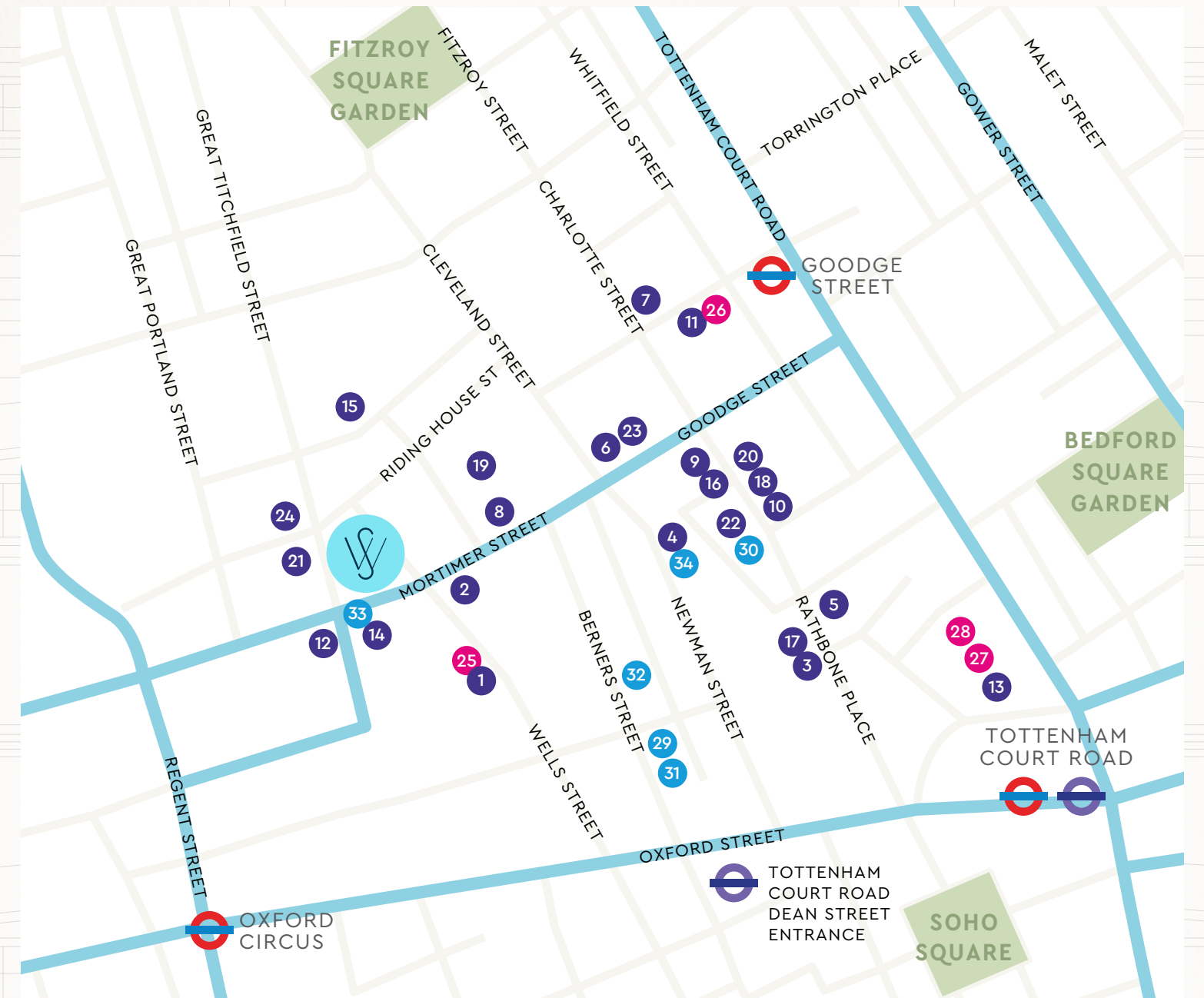
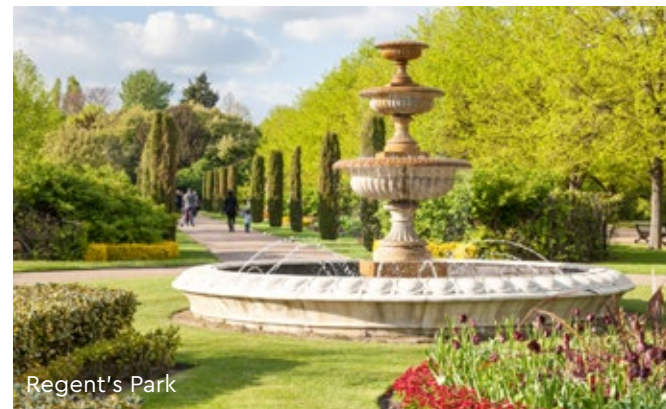
Fitzrovia is a highly desirable and popular area in the central London, covering approximately 160 acres of the West End. It is bordered by Euston to the north, Bloomsbury to the east, Soho to the south and Marylebone to the west and has long been known as a creative hub and home to writers, artists, musicians, cutting edge Architectural firms and media agencies. Alongside it's outstanding restaurants, Fitzrovia is a flourishing scene of independent galleries and design retailers, with Oxford Street and Soho only minutes away, this is one of the most attractive and vibrant districts of London.

In recent years major investment and development has taken place in Fitzrovia making it one of London's most attractive places to live and work.



50/51 WELLS STREET IS PART OF CENTRAL LONDON'S MOST STYLISH NEIGHBOURHOOD, FITZROVIA, WITH ACCESS TO THE CAPITAL'S FASHIONABLE RESTAURANTS, GALLERIES, HOTELS AND SHOPPING.

Boutique and independent retailers are abound. Highly regarded restaurants such as Mortimer House Kitchen and Rovi elevate the abundant dining scene. World-class hotels and top art galleries are all in the close vicinity. The area is well known for its recent landmark office developments, together with a large range of independent cafés, pubs, bars and restaurants, it is fast becoming a restaurant destination, with big names in the culinary world flocking to secure a space.



FOOD

- 1. Rovi
- 2. Mortimer House Kitchen
- 3. Circolo Popolare
- 4. Mr Fogg
- 5. BAO, House of Ho
- 6. Barrica
- 7. Bubbledogs
- 8. The Detox Kitchen
- 9. The Queen Charlotte
- 10. The Fitzroy Tavern
- 11. Gaucho
- 12. Arros

- 13. Hakkasan
- 14. Kaffeine
- 15. Attendant Coffee
- 16. Lantana Café
- 17. Lima
- 18. The Ninth
- 19. The Arber Garden
- 20. Pied a Terre
- 21. Riding House Café
- 22. Roka
- 23. Salt Yard
- 24. Scandi Kitchen

RETAILERS

- 25. Cartoon Museum
- 26. Pollocks Toy Museum
- 27. Planet Organic / Oasis
- 28. Hotel Chocolat / T2

BARS & HOTELS

- 29. Berners Tavern
- 30. Charlotte Street Hotel
- 31. The London EDITION
- 32. Sanderson London Hotel
- 33. The Champion
- 34. The Mandrake



ALONGSIDE SOME OF THE BRIGHTEST, BEST KNOWN BRANDS IN THE WORLD!

Fitzrovia is now the preferred West End location for a diverse range of office occupiers, rivalling other core areas such as Mayfair, Soho and Marylebone. In addition to the extensive range of existing restaurants, retailers and lifestyle brands close to 50/51 Wells Street, Facebook, Estée Lauder, Arup Associates, Capita Business Services and the BBC are just a few examples of high-profile companies committed to Fitzrovia due to the prime quality office space and cosmopolitan environment.



THE PROPERTY IS IDEALLY SITUATED NEAR A NUMBER OF LONDON UNDERGROUND STATIONS AND THE NEWLY OPENED ELIZABETH LINE

50/51 Wells Street is located on the west side of Wells Street close to the junction of Riding House Street. It is well served by transport links with numerous bus links nearby and Oxford Circus, Tottenham Court Road and Goodge Street Underground Stations within a short walking distance.



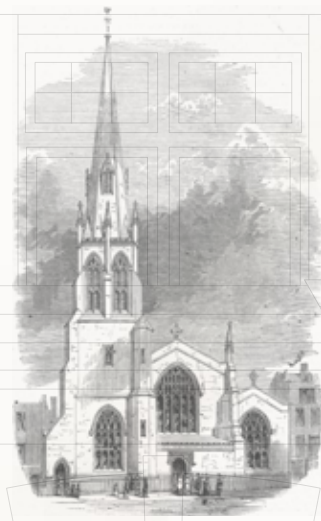
- 5** Oxford Circus
5 mins walk
- 6** Tottenham Court Rd
6 mins walk
- 7** Goodge Street
7 mins walk
- 8** Great Portland St
8 mins walk

From OXFORD CIRCUS



From TOTTENHAM COURT ROAD (Elizabeth Line)





1847

St Andrew's Church thrived when built in the late 1840s. After the First World War, attendances plummeted and it closed in 1931. Planners wanted to demolish the church and replace it with new office buildings, but after public outcry, it was moved block-by-block towards Wembley Stadium.

FITZROVIA - A NEW NAME FOR COSMOPOLITAN AREA

Fitzrovia is one of the most historic parts of London and was once home to thought leaders such as author George Orwell and American Revolutionary Thomas Paine. The area was first referred to as Fitzrovia in the 1930s, being named after the Fitzroy Tavern on Charlotte Street where a group of writers used to gather. Before then it did not have its own name and was known by its major streets and places like Tottenham Court Road, Fitzroy Square, and Great Titchfield Street.

1939-44

Fitzrovia was not severely bombed during WW2 due to the range of German Bombers as well as the lack of Military targets in the area. The Germans did not formally adopt blanket bombing, as the RAF and USAF at Dresden, instead they concentrated on the Docks around the Eastend.



1970

Fitzrovia becomes home to many media Outlets, such as the Election Studio at ITN headquarters in Wells Street, London. Three of the key men in Independent Television's General Election coverage on polling night.



1890

Count Alexander Munster and Lady Muriel Hay were married at St Andrew's Church, Wells Street.



For more information:



Dan Brown
07710 249 297
dan@situu.co.uk

Tom Leahy
07955 147 734
tom@situu.co.uk

 [VIEW AVAILABILITES](#)

50-51wellsstreet.com